



RS II VSTD

EXPERT LINE



YEARS OF WARRANTY

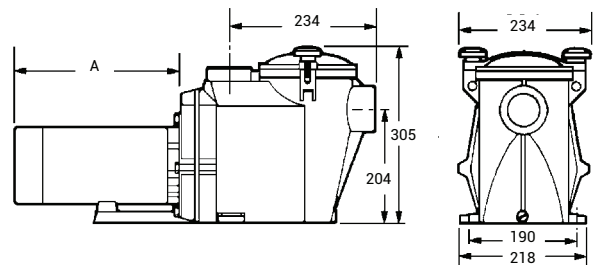
3 STANDARD **4** YEAR

Totally Hayward®

PACKED FULL OF PERFORMANCE AND TECHNOLOGY

- **1.5 HP and 2 HP available**
- Smart Inverter + Permanent Magnet Motor + synchronized motor : electricity saving up to 85%*
- **Extremely quiet**
- **Remote control**, even through the smartphone, by connecting it to AquaRite® +
- **180° rotary box for convenient access** to the user interface
- **Lexan™ transparent lid with wingnut closing system, no tools needed**
- **Union fittings provided**
- Recommended for pools **up to 100 m³****

* Running at low speed. Electricity savings of 65% are generally achieved.
 ** Running at low speed 24 hours



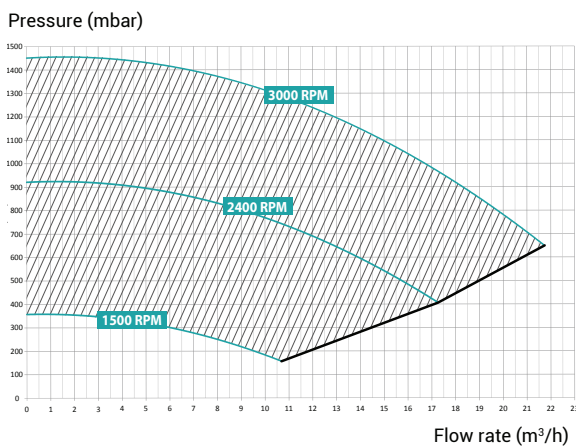
Technical Specifications

Max. water temp.	35°C
Mechanical seal	AISI 304, suitable for salt water
Motor-drive specifications	Class F, IP55, 50 Hz, Brushless VFD
Housing/impeller/strainer/lid	PP+GF/Noryl® + GF/ABS/PC

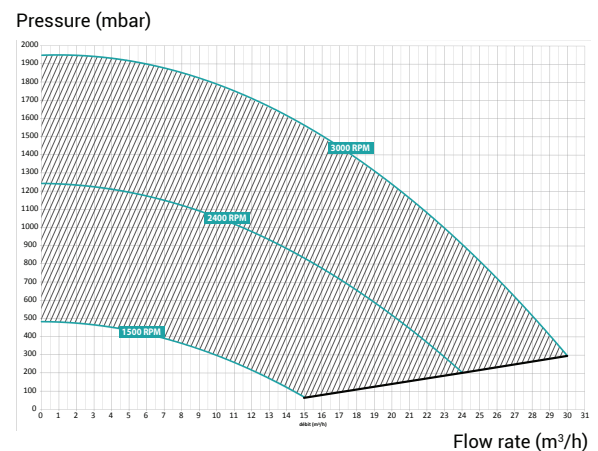


The intuitive control module displays relevant information such as real-time energy consumption. Improved control box, with the addition of five daily programs. "Skimming" function that allows the surface to be automatically skimmed every 1, 2 or 3 hours. **Timer Mode.**

• 1.5 HP Curve



• 2 HP Curve



RS II VSTD

Speed	Type	Dim A	I/O	Flow rate*	Input Power P1	Output Power P2	Amperage	Item
600 - 3000 RPM (20 rpm)	1.5 HP	230 mm	63 mm	@10 m: 16.7 m ³ /h @8 m: 19.7 m ³ /h	1240 W	1100 W	5.9 A	RS3016VSTD
600 - 3000 RPM (20 rpm)	2 HP	250 mm	63 mm	@10 m: 23 m ³ /h @8 m: 25 m ³ /h	1500 W	1400 W	7.8 A	RS3020VSTD

* at 3000 Rpm